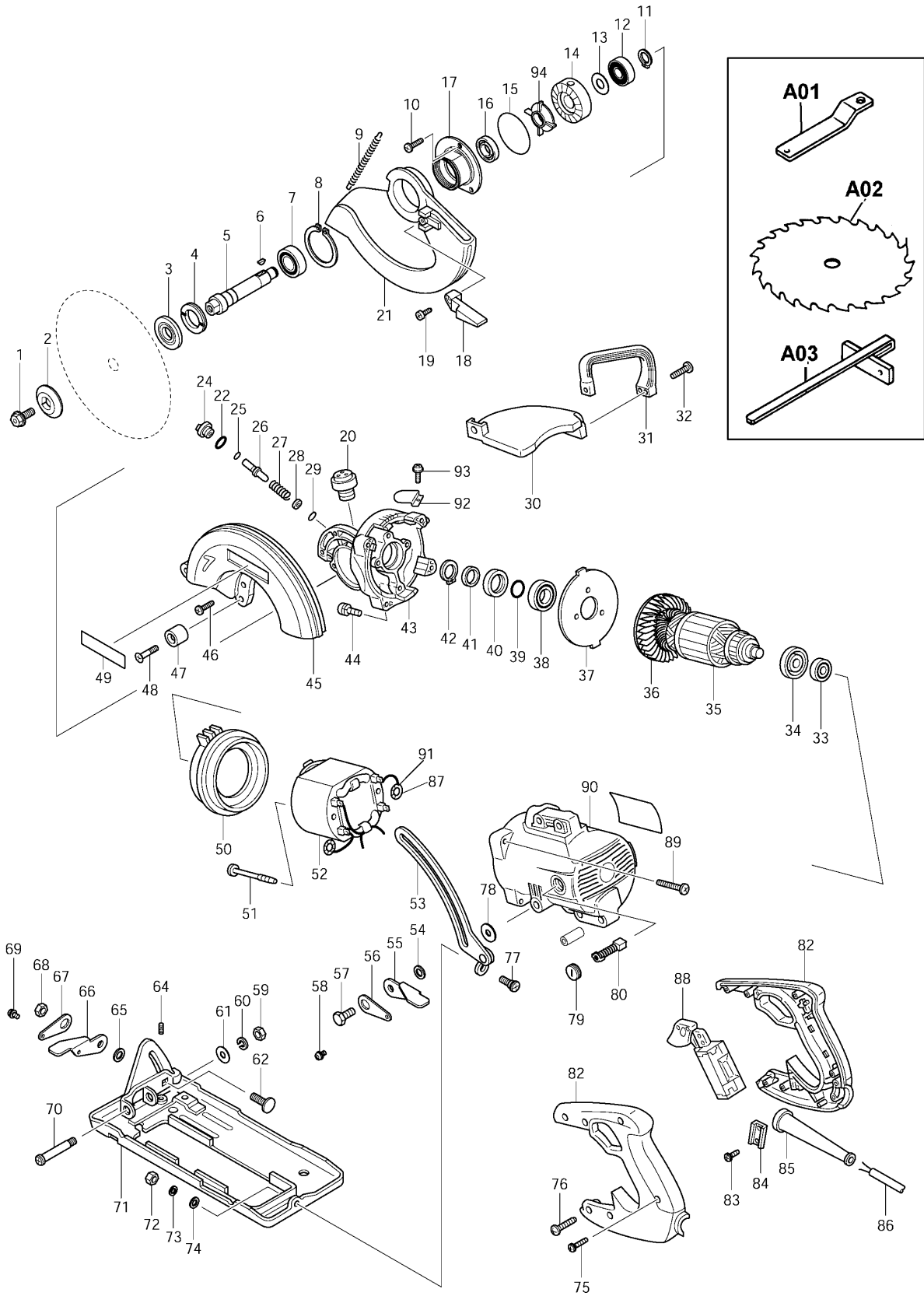
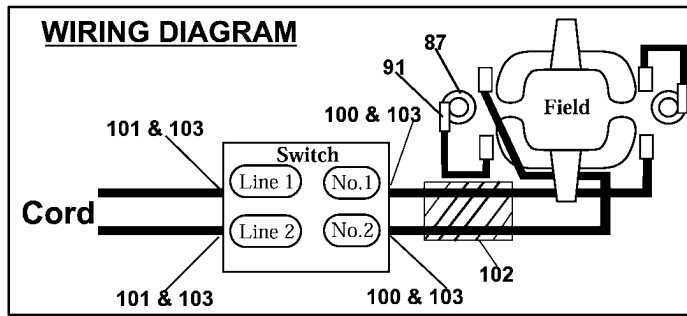




7-1/4" HYPOID SAW

Model 5277NB(MCA)





Item No.	Part No.	No. Used	Description	Item No.	Part No.	No. Used	Description
1	265315-4	1	Hex. Flange Head Bolt M8X20	48	251350-8	1	+ Countersunk Head Screw M6X28
2	224275-9	1	Outer Flange 40	49	819064-1	1	Makita Mark
3	224268-6	1	Inner Flange 40	50	415797-2	1	Baffle Plate
4	285809-3	1	Bearing Retainer 23-36	51	266029-8	2	Tapping Screw 5X65
5	322840-9	1	Spindle	52	596106-5	1	Field Assy (Includes Items 87 & 91)
6	254001-2	1	Woodruff Key 4	53	163435-7	1	Depth Guide
7	211251-2	1	Ball Bearing 6003LLB	54	941201-0	1	Flat Washer 8
8	961201-4	1	Retaining Ring S-42	55	345298-5	1	Lever Plate
9	231831-8	1	Tension Spring 4	56	341415-5	1	Lock Plate
10	266036-1	3	Tapping Screw Bind CT 5X20	57	921432-7	1	Hex. Bolt M8X20
11	961052-5	1	Retaining Ring S-12	58	911108-4	1	P.H. Screw M4X8
12	211109-5	1	Ball Bearing 6201	59	931402-8	1	Hex. Nut M8
13	267024-1	1	Flat Washer 12	60	942201-3	1	Spring Washer 8
14	226729-2	1	Hypoid Gear 36	61	253731-2	1	Flat Washer 8
15	213604-1	1	O Ring 50	62	265965-5	1	Cap Square Neck Bolt M8X24
16	213260-7	1	Oil Seal 17	64	266213-5	1	Hex. Socket Head Screw M5X12
17	316725-9	1	Bearing Box	65	941201-0	1	Flat Washer 8
18	415799-8	1	Lever	66	345298-5	1	Lever Plate
19	266026-4	1	Tapping Screw Bind CT 4X12	67	341415-5	1	Lock Plate
20	168287-1	1	Breather	68	931402-8	1	Hex. Nut M8
21	316726-7	1	Safety Cover	69	911108-4	1	P.H. Screw M4X8
22	213162-7	1	O Ring 14	70	265042-3	1	+ Flat Head Screw M8
24	415798-0	1	Cap 20	71	163436-5	1	Base
25	213005-3	1	O Ring 5	72	931302-2	1	Hex. Nut M6
26	268011-3	1	Pin 6	73	942151-2	1	Spring Washer 6
27	231278-6	1	Compression Spring 6	74	941151-9	1	Flat Washer 6
28	253145-5	1	Flat Washer 6	75	266045-0	2	Tapping Screw 4X20
29	213017-6	1	O Ring 6	76	266041-8	4	Tapping Screw 5x25
30	415800-9	1	Cover	77	265041-5	1	+ Flat Head Screw M6
31	415801-7	1	Grip	78	253022-1	1	Flat Washer 8
32	266036-1	3	Tapping Screw Bind CT 5X20	79	643650-4	2	Brush Holder Cap 6.5-13.5
33	211056-0	1	Ball Bearing 629LLB	80	181047-4	2	Carbon Brush CB-154 (2pcs/Set)
34	681633-6	1	Insulation Washer	82	183525-0	1	Handle Set
35	516646-7	1	Armature Assy (Includes Items 33, 34 & 36)	83	266020-6	2	Tapping Screw 4X12
36	241905-7	1	Fan 80	84	687673-2	1	Strain Relief
37	285682-1	1	Bearing Retainer	85	682505-8	1	Cord Guard 10-90
38	211251-2	1	Ball Bearing 6003LLB	86	664478-7	1	Cord with Plug 2P-14-3.0
39	213226-7	1	O Ring 16	87	654020-2	2	Ring Terminal
40	213389-9	1	Oil Seal 22	88	651160-7	1	Switch 8673K10Y7 Double Pole
41	257198-6	1	Ring 17	89	266032-9	4	Tapping Screw Bind CT 5X30
42	961077-9	1	Retaining Ring S-17	90	153393-5	1	Motor Housing Com. (Includes 643660-1 - Brush Holder 6.5-13.5 & 817422-5 - Caution Label EN/FR)
43	316728-3	1	Gear Housing			1	
44	911206-4	2	P.H. Screw M5X10	91	654502-4	2	Connector
45	316727-5	1	Blade Case	92	344350-6	1	Breather Retainer
46	266036-1	3	Tapping Screw Bind CT 5X20	93	911118-1	1	P.H. Screw M4X12
47	262553-9	1	Rubber Sleeve 6	94	240005-0	1	Fan 45

Item No.	Part No.	No. Used	Description
100	654001-6	2	Terminal R1.25-3.5
101	654004-0	2	Terminal 2-S3
102	683183-7	1	Polyethylene Tube 8-60
103	652008-6	4	P.H. Screw M3.5X7

Accessories

A01	782016-4	1	Offset Wrench 13
A02	A-90940	1	7-1/4" C.T.Saw Blade (5/8") 24 teeth
	792446-1	1	7-1/4" Combination Saw Blade 40 Teeth
	792436-4	1	7-1/4" Chisel Tooth Combination Saw Blade 20 Teeth
	792435-6	1	7-1/4" C.T. Saw Blade 16 Teeth
A03	165153-3	1	Guide Rule

When replacing the Armature or Gear, use Pioneer Gear Oil # 90 (P/N 041005-1) 30cc.
If another oil is used it causes abnormal wear-out of Gears.

SERVICE CHANGES

1. Addition of Stopper Plate, O Ring 12 and Hook Assembly, □

Modification of Base, Depth Guide and Lever Plate, Change of Several Screws

(TI#74198)

Item No	Description	Type 1	Qty	Type 2	Qty
95	O ring 12	-----		213118-0	1
96	Stopper Plate	-----		345677-7	1
71	Base	163436-5	1	163462-4	1
70	+ Flat head Screw M8	265042-3	1	265163-1	1
97	Hex. Socket Head Screw M5x12	-----		266213-5	1
98	Hook Assy	-----		125319-7	1
32	Tapping Screw Bind CT5x20 > CT5x30	266036-1	3	266032-9	2
99	Tapping Screw Bind CT5x20	-----		266036-1	1
53	Depth Guide	163435-7	1	163463-2	1
55,66	Lever Plate	345298-5	2	345678-5	2

* parts are interchangeable as a set

